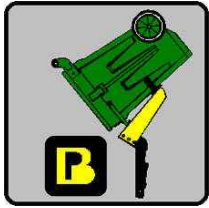




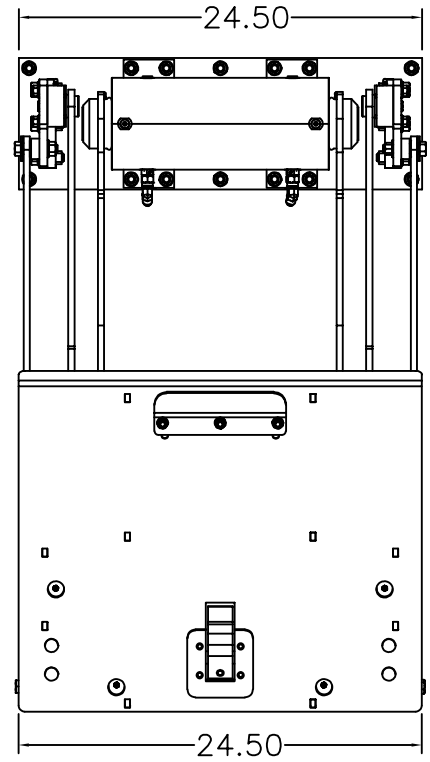
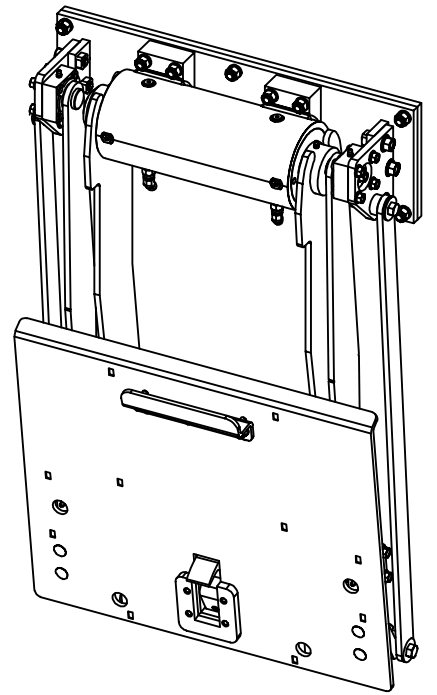
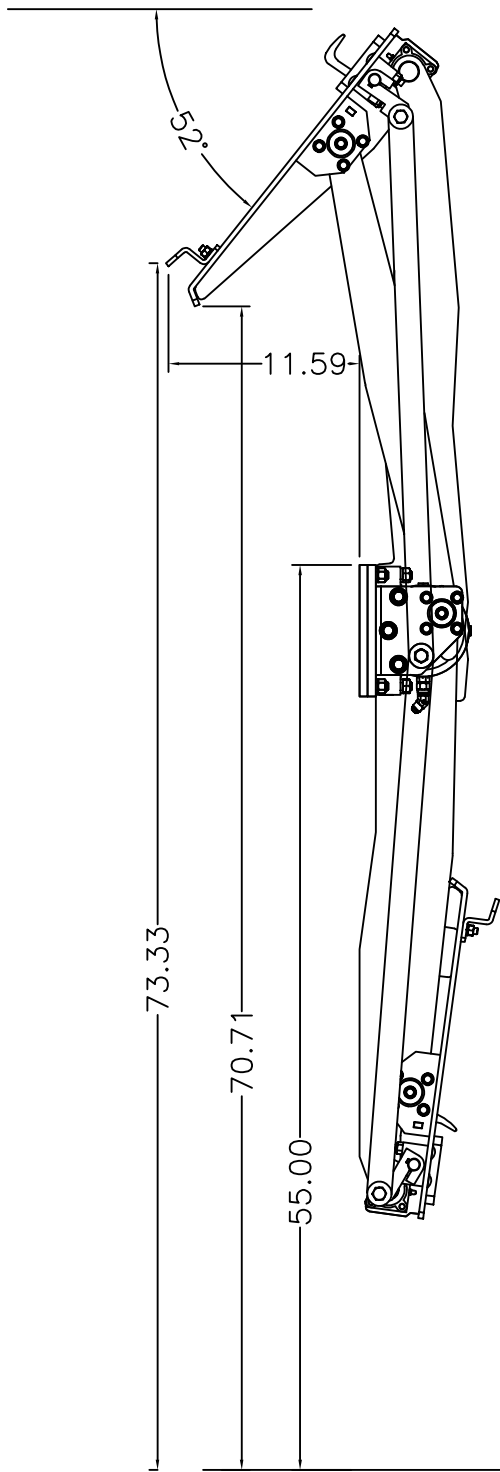
BP LIFTS
BY BARKER PRODUCTS
1310 Miller Road, Greenville, SC 29607
Phone:800-349-3149—Fax:864-297-1292



BPH2-27 SERIES LIFTS



***Powered By A 27K Helical Actuator
With
Splined Shafts To Eliminate Arm Movement & Wear
For
Extreme Heavy Duty High Lift Applications
45" To 57" Mounting Heights
50" To 74" Dump Heights
Over 50 Degree Dump Angle To Empty Can Quickly
Dumps Deep Into Hopper to Prevent Spillage
Hardened Steel Bearings At All Pivot Points***



GROUND LEVEL



BARKER PRODUCTS
1310 MILLER ROAD
GREENVILLE, SC
29607

DRAWN BY: R WYMAN

DATE: 9/20/2022

MATERIAL: NOTED

DO NOT SCALE
DRAWING
UNLESS OTHERWISE SPECIFIED:
DIMENSIONS ARE IN INCHES
TOLERANCES:
FRACTIONAL ±1/32
ANGULAR: MACH ±1° BEND ±1°
TWO PLACE DECIMAL ±0.010
THREE PLACE DECIMAL ±0.005

BU18955 LIFT
BW18400 ACTUATOR

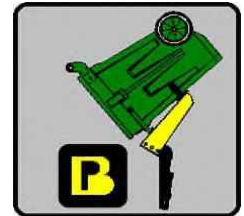
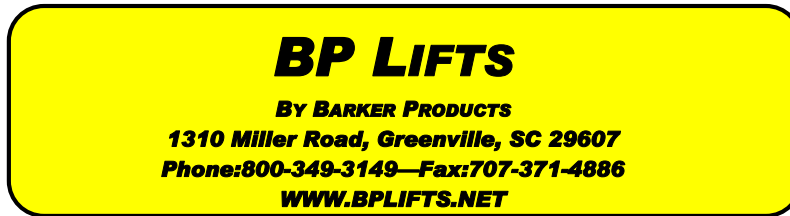
DRAWING NO
BU18955

SCALE: 1:12

WEIGHT: 289.542 #

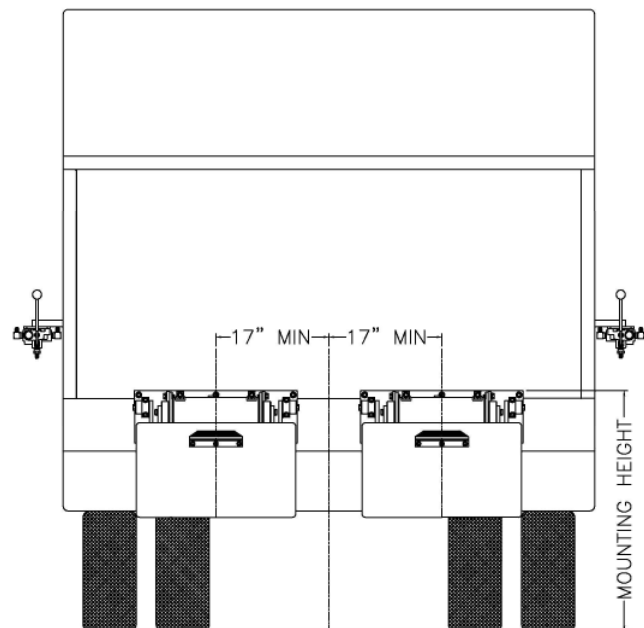
REV
00

SHEET 1 OF 1



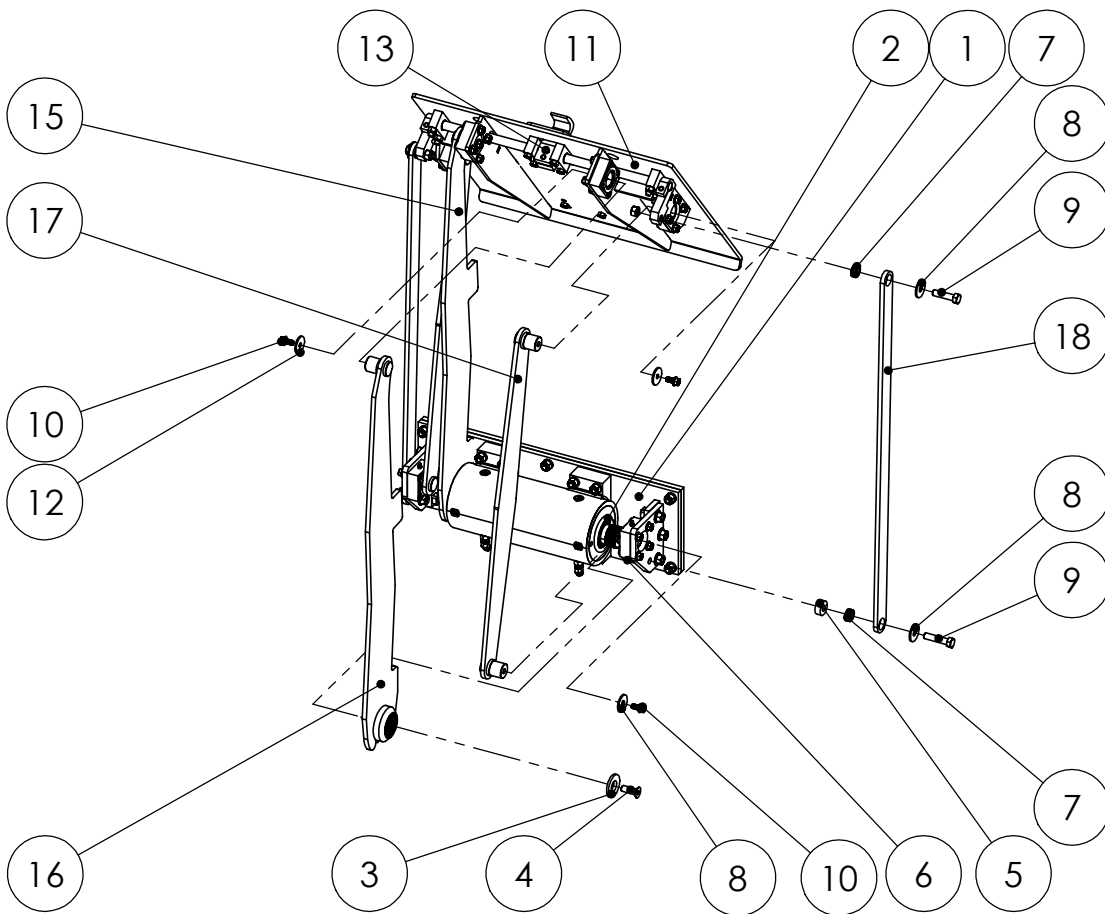
Lift Unit Installation

1. Truck must be empty, clean and parked on a level surface before installation is started.
2. Remove all bumpers and running boards that will interfere with the location of the lift units. Relocate lower mounted tail lights as needed.
3. Measure and mark the centerline of the truck hopper. The centerline of the unit or units should be a minimum of 17" from the hopper centerline.
4. Hand valves should be mounted on the side of the hopper at the most convenient height for the operator and clear of the packer controls.
5. The top of the unit mounting plate should be tack welded in place at the height recommended on the envelope dimension sheet of the unit.
CAUTION: SEE NOTE BELOW PICTURE
6. All dimensions should be approved by the customer before final welding.
7. If the mounting plate extends more than 2" above the hopper, a brace should be added.



Mounting heights and locations are recommendations only. It is the responsibility of the installer to insure that the customer is satisfied with the height. Barker Products recommends that after the units are tacked in place, try the units with the can or cans the customer uses. The customer should approve your mount before final welding.

| ITEM NO. | PART NUMBER | DESCRIPTION | QTY. |
|----------|-------------|-------------------------------|------|
| 1 | BWA18430 | MAINFRAME SUB ASSY | 1 |
| 2 | BW18002 | O-RING GREASE SEAL | 2 |
| 3 | BW18005 | SPLINE CAP HB25 | 2 |
| 4 | XAD081312 | 1/2-13 X 1 1/2 FHSCS | 2 |
| 5 | BW18520 | HOOK LINK DRIVE SPACER | 2 |
| 6 | XDH081300 | 1/2-13 FLANGED NUT | 2 |
| 7 | BW99108 | 1/2" SPHERICAL BEARING | 4 |
| 8 | XEA082412SS | FLAT WASHER 1/2 X 1 1/2 X 1/8 | 6 |
| 9 | XAA081316 | 1/2-13 X 2 HHCS | 4 |
| 10 | XAE061606 | 3/8-16 X 3/4 FLANGED HHCS | 6 |
| 11 | BWA18540 | LIFT PLATE SUB ASSY | 1 |
| 12 | XEA062412SS | FLAT WASHER 3/8 X 1 1/2 X 1/8 | 4 |
| 13 | BWA07490 | HOOK SUB ASSY | 1 |
| 14 | XDA081300 | 1/2-13 HEX NUT | 2 |
| 15 | BW18615 | LEFT LIFT ARM | 1 |
| 16 | BW18616 | RIGHT LIFT ARM | 1 |
| 17 | BW18665 | GUIDE ARM | 2 |
| 18 | BW18705 | HOOK LINK | 2 |



DO NOT SCALE DRAWING

UNLESS OTHERWISE SPECIFIED:
 DIMENSIONS ARE IN INCHES
 TOLERANCES:
 FRACTIONAL ±1/32
 ANGULAR: MACH ±1° BEND ±1°
 TWO PLACE DECIMAL ±0.010
 THREE PLACE DECIMAL ±0.005

BU18955 LIFT PARTS
 BU18400 ACTUATOR

DRAWING NO.
 BU18955 PARTS

SCALE: 1:16 WEIGHT: 286.542 # SHEET 1 OF 1

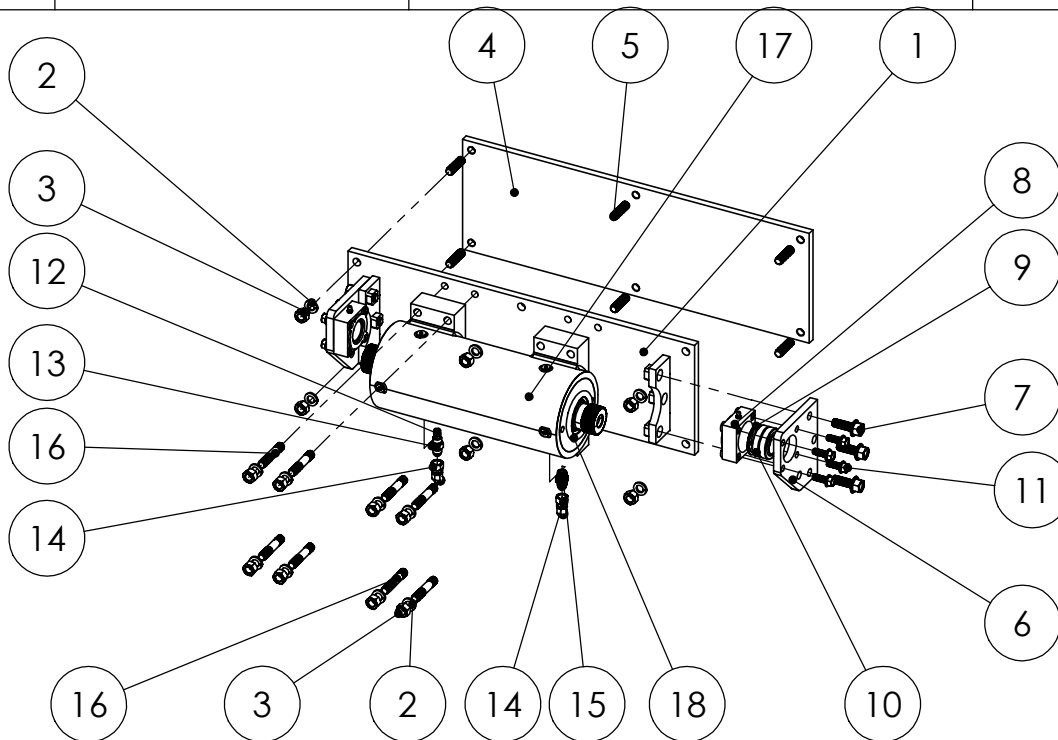


BARKER PRODUCTS
 1310 MILLER ROAD
 GREENVILLE, SC
 29607

DRAWN BY: R WYMAN
 DATE: 5/31/2022
 MATERIAL: NOTED

REV
 00

| ITEM NO. | PART NUMBER | DESCRIPTION | QTY. |
|----------|-------------|-----------------------------|------|
| 1 | BW18506 | MAINFRAME | 1 |
| 2 | XEB081000 | 1/2 LOCK WASHER | 14 |
| 3 | XDA082000 | 1/2-20 HEX NUT | 14 |
| 4 | BW07030 | MOUNT PLATE H | 1 |
| 5 | BW07140 | PLATE STUD | 6 |
| 6 | BW18510 | BEARING MOUNT | 2 |
| 7 | XAE081312 | 1/2-13 X 1 1/2 FLANGED HHCS | 6 |
| 8 | BW18530 | BEARING BODY | 2 |
| 9 | BW21065 | PIVOT BEARING SPACER | 2 |
| 10 | BW99320 | SPHERICAL BEARING 1 1/4 | 2 |
| 11 | XAE061608 | 3/8-16 X 1 FLANGED HHCS | 8 |
| 12 | BV00025 | 116 X 1/8 NPT ORIFICE PLUG | 1 |
| 13 | BV00064 | 6T X 6S ORIFICE FITTING | 1 |
| 14 | BR04842 | 6502-06-06 MJ-FJS 45 DEG | 2 |
| 15 | BR03830 | 6400-06-06 M TUBE TO O-RING | 1 |
| 16 | BW07105 | ACTUATOR MOUNT STUD | 8 |
| 17 | BW18400 | ACTUATOR | 1 |
| 18 | BW18002 | O-RING GREASE SEAL | 2 |

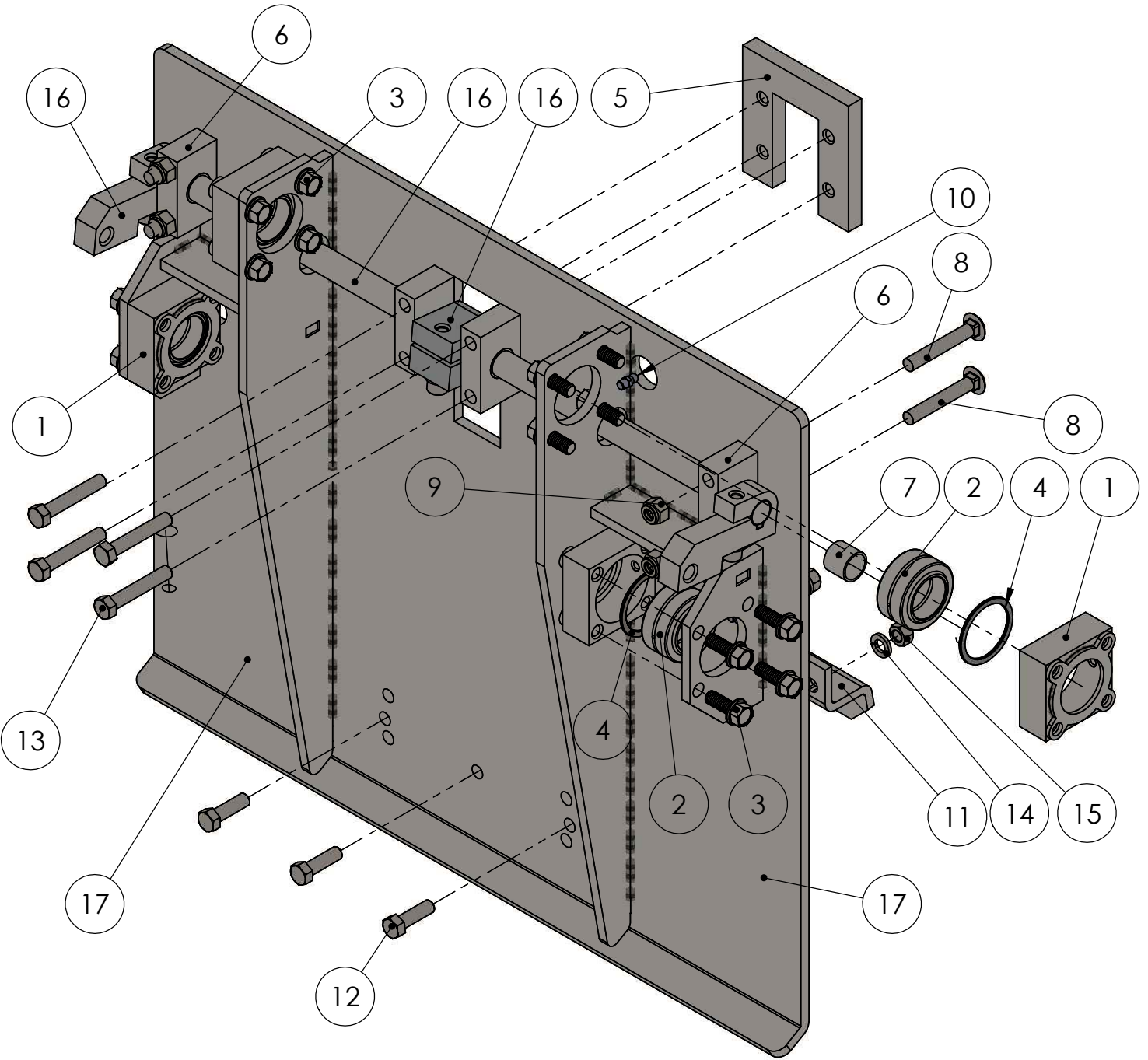


| | | | |
|--|--|--------------------|--------------------------------|
| DO NOT SCALE DRAWING | | MAINFRAME SUB ASSY | |
| UNLESS OTHERWISE SPECIFIED: DIMENSIONS ARE IN INCHES | | BU189XX | |
| TOLERANCES: | | DRAWING NO | |
| FRACTIONAL ±1/32 | | BWA18430 PARTS | |
| ANGULAR: MACH ±1° BEND ±1° | | REV | |
| TWO PLACE DECIMAL ±0.010 | | 00 | |
| THREE PLACE DECIMAL ±0.005 | | SCALE: 1:12 | WEIGHT: 146.796 # SHEET 1 OF 1 |



BARKER PRODUCTS
1310 MILLER ROAD
GREENVILLE, SC
29607

DRAWN BY: R WYMAN
DATE: 6/2/2022
MATERIAL: NOTED



| | | | |
|---|------------------|------------------------------------|-----------|
| DO NOT SCALE DRAWING | | LIFT PLATE SUB ASSY H2-25 LIFTS | |
| UNLESS OTHERWISE SPECIFIED: DIMENSIONS ARE IN INCHES TOLERANCES: FRACTIONAL $\pm 1/32$ ANGULAR: MACH $\pm 1^\circ$ BEND $\pm 1^\circ$ TWO PLACE DECIMAL ± 0.010 THREE PLACE DECIMAL ± 0.005 | | DRAWING NO BWA18540 | REV 01 |
| SCALE: 1:4 | WEIGHT: 74.297 # | SHEET 1 OF 2 | |



BARKER PRODUCTS
1310 MILLER ROAD
GREENVILLE, SC
29607

DRAWN BY: R WYMAN
DATE: 8/1/2017
MATERIAL: NOTED

| ITEM NO. | PART NUMBER | DESCRIPTION | EXPLODED PARTS/QTY. |
|----------|-------------|-------------------------------|---------------------|
| 1 | BW18530 | BEARING BODY | 4 |
| 2 | BW99320 | SPHERICAL BEARING 1 1/4 | 4 |
| 3 | XAE061608 | 3/8-16 X 1 FLANGED HHCS | 16 |
| 4 | BW21065 | PIVOT BEARING SPACER | 4 |
| 5 | BZ03451 | SUPPORT PLATE | 1 |
| 6 | BW17130 | HOOK BEARING MOUNT | 4 |
| 7 | BW03195 | 12-DU-12 BEARING | 4 |
| 8 | XAH061620 | 3/8-16 X 2 1/2 CARRIAGE BOLT | 4 |
| 9 | XDC061600 | 3/8-16 NYLOK NUT | 4 |
| 10 | BW01110 | GREASE FITTING - 1/4-28 SHORT | 4 |
| 11 | BW00800 | SADDLE | 1 |
| 12 | XAA061610 | 3/8-16 X 1 1/4 HHCS | 3 |
| 13 | XAA061618 | 3/8-16 X 2 1/4 HHCS | 4 |
| 14 | XEB061000 | 3/8 LOCKWASHER | 3 |
| 15 | XDA061600 | 3/8-16 HEX NUT | 3 |
| 16 | BWA07490 | HOOK SUB ASSY | 1 |
| 17 | BW18540 | LIFT PLATE | 1 |



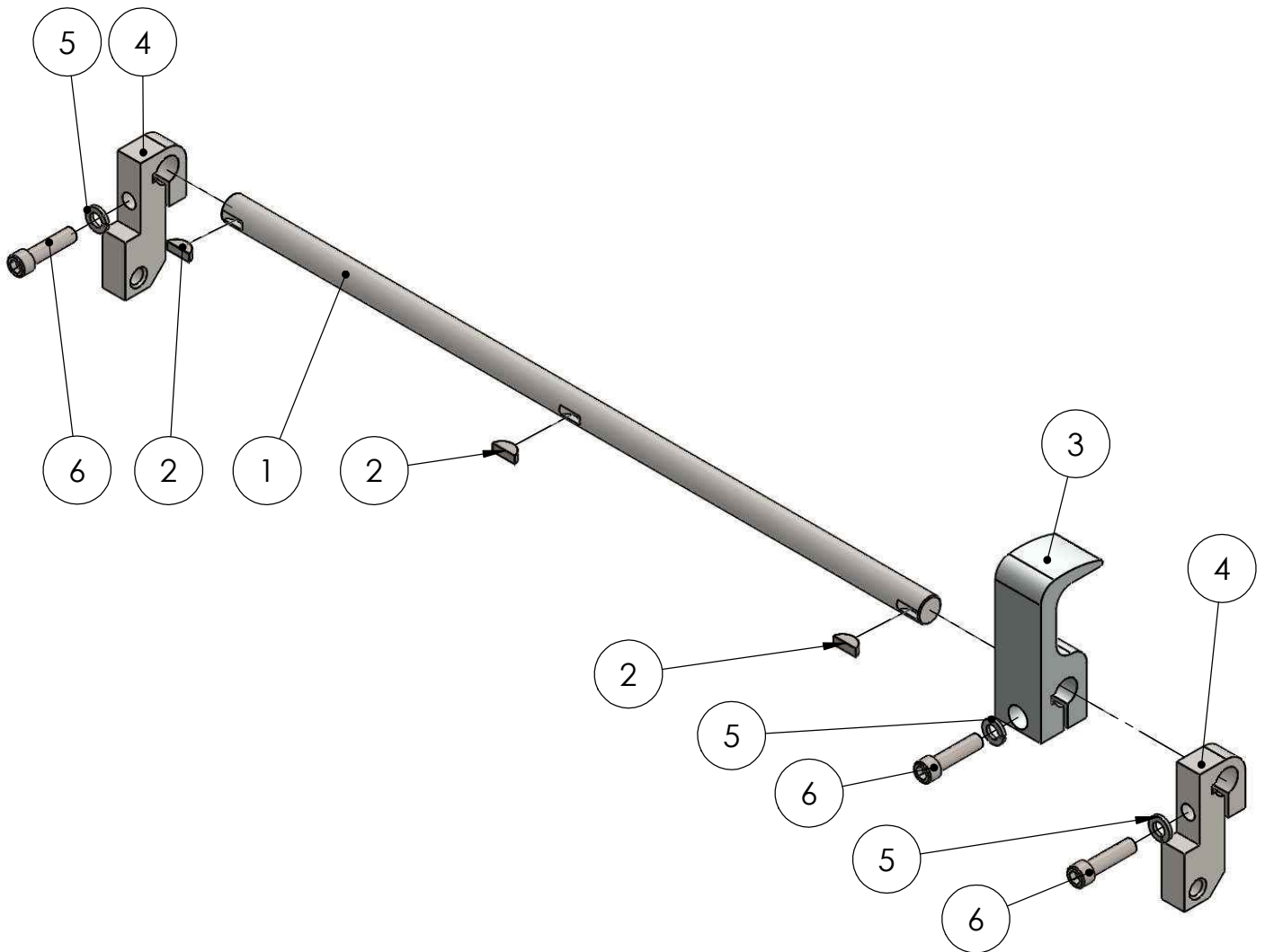
BARKER PRODUCTS
1310 MILLER ROAD
GREENVILLE, SC
29607

DRAWN BY: R WYMAN
DATE: 8/1/2017
MATERIAL: NOTED

DO NOT SCALE
DRAWING
UNLESS OTHERWISE SPECIFIED:
DIMENSIONS ARE IN INCHES
TOLERANCES:
FRACTIONAL ±1/32
ANGULAR: MACH ±1° BEND ±1°
TWO PLACE DECIMAL ±0.010
THREE PLACE DECIMAL ±0.005

LIFT PLATE SUB ASSY
H2-25 LIFTS
DRAWING NO
BWA18540
SCALE: 1:6 WEIGHT: 74.297 # SHEET 2 OF 2
REV
01

| ITEM NO. | PART NUMBER | DESCRIPTION | EXPLODED PARTS/QTY. |
|----------|-------------|---------------------|---------------------|
| 1 | BW18550 | HOOK SHAFT | 1 |
| 2 | BW07560 | WOODRUFF KEY #806 | 3 |
| 3 | BW07490 | HOOK | 1 |
| 4 | BW06780 | HOOK DRIVE | 2 |
| 5 | XEB061000 | 3/8 LOCKWASHER | 3 |
| 6 | XAB061612 | 3/8-16 X 1 1/2 SHCS | 3 |

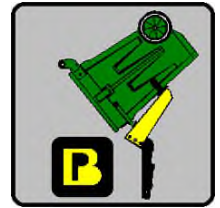
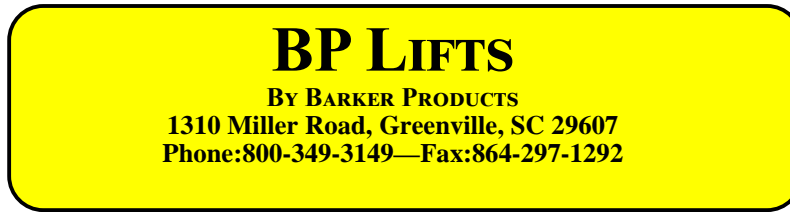


| | | | |
|--|-----------------|------------------------|-----------|
| DO NOT SCALE DRAWING | | HOOK SUB ASSY H2-25 | |
| UNLESS OTHERWISE SPECIFIED: DIMENSIONS ARE IN INCHES TOLERANCES: FRACTIONAL ±1/32 ANGULAR: MACH ±1° BEND ±1° TWO PLACE DECIMAL ±0.010 THREE PLACE DECIMAL ±0.005 | | DRAWING NO BWA07490 | REV 00 |
| SCALE: 1:4 | WEIGHT: 6.177 # | SHEET 1 OF 1 | |



BARKER PRODUCTS
1310 MILLER ROAD
GREENVILLE, SC
29607

DRAWN BY: R WYMAN
DATE: 8/1/2017
MATERIAL: NOTED



BPH27-186XX SERIES LIFT UNIT WARRANTY

Barker Products warrants each new dump unit to be free of defects in material and workmanship under normal use and service for a period of 1 year or 2000 hours of operation, whichever comes first, from the date of delivery.

This warranty excludes any obligations by BARKER PRODUCTS for the cost of down time. BARKER PRODUCTS will not warranty any dump unit which has been subject to misuse, neglect, alteration, or damaged by an accident.

On any work not performed by BARKER PRODUCTS or it's representative, the customer will be responsible for freight charges on all parts shipped under warranty. Parts will be invoiced at time of shipment. Defective parts must be returned to BARKER PRODUCTS within 30 days. If the part is determined to be defective the customer will be credited for the original invoice.

Customer warranty labor charges must be approved by BARKER PRODUCTS in advance. If not contacted for approval, BARKER PRODUCTS will not be liable for the warranty labor charge.

Limit hydraulic input pressure to 2000PSI