



Barker Products

1310 Miller Road, Greenville, SC 29607



BPHBP-15 Lift

CAN NOT BE HIT BY THE PACKER BLADE

- **Dependable Smooth Acting Helical Rotary Actuator**
- **Splined Shafts To Eliminate Arm Movement And Wear**
- **All Bearings Are Teflon Coated**
- **No Grease Points**
- **Kickout Feature To Prevent Ground Damage**
- **EZ Bolt On Kit**
- **Meets ANSI Z245 Type B Specs**
- **Lifts All Standard American 2 Bar Carts**
- **Double Wide Mounting Plate Available. Increases Hopper Height To Decrease Packing Cycles**
- **40 to 42 Inch Mounting Height**
- **19 to 21 Inch Ground Clearance**
- **Use on Rear Loaders With Lower Kick Bar Dumping Commercial Containers**



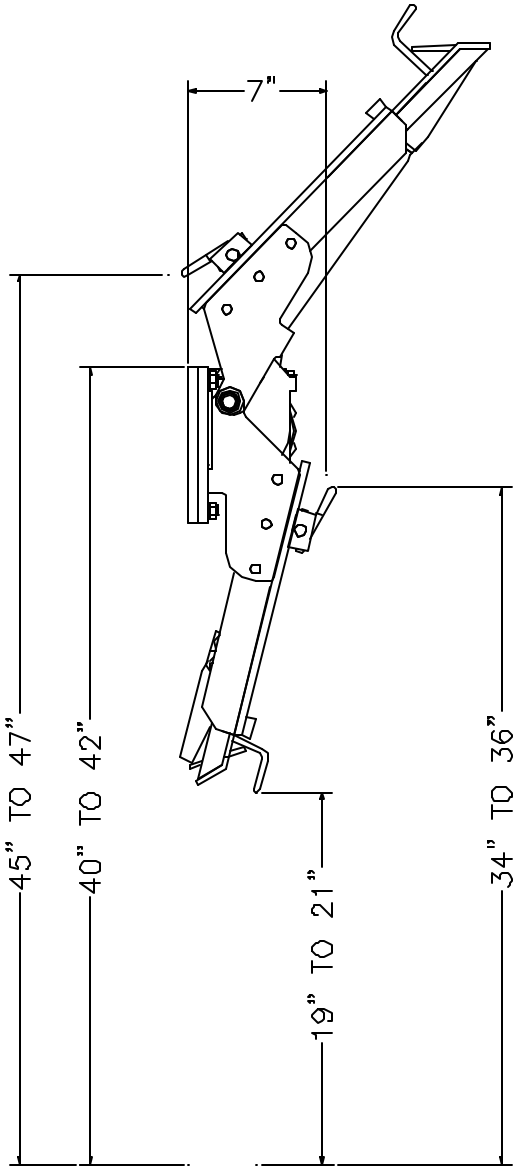


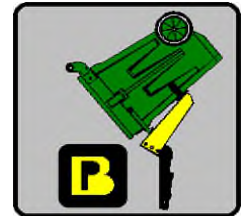
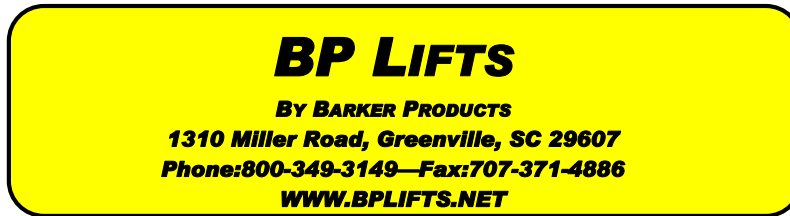
BARKER PRODUCTS
1310 Miller Road, Greenville, SC 29607 Phone:800-349-3149



BPHBP-15

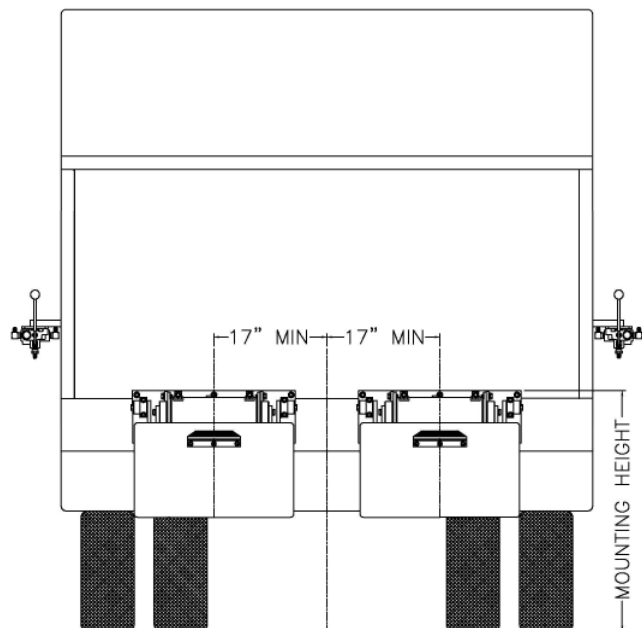
Envelope Dimensions





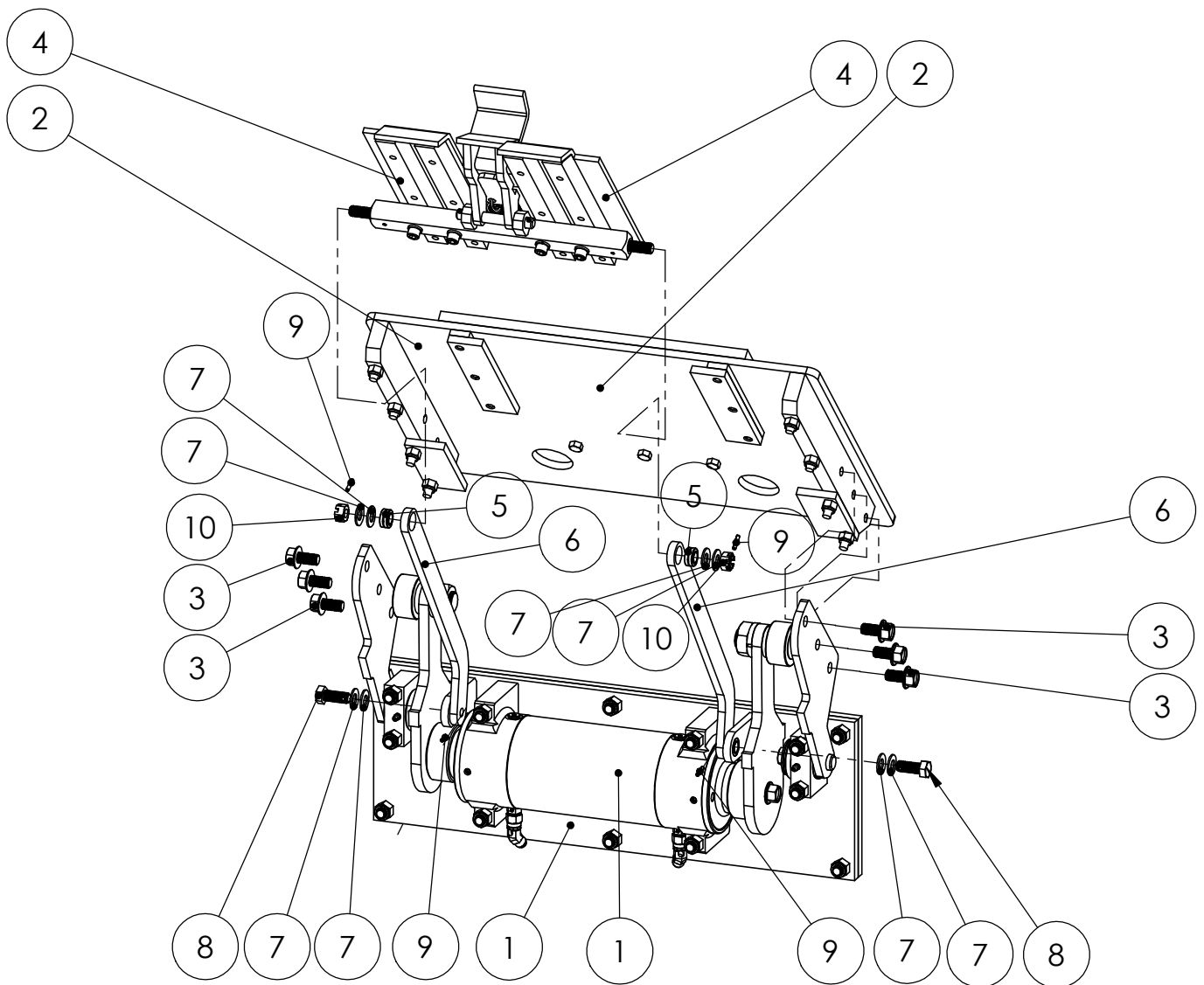
Lift Unit Installation

1. Truck must be empty, clean and parked on a level surface before installation is started.
2. Remove all bumpers and running boards that will interfere with the location of the lift units. Relocate lower mounted tail lights as needed.
3. Measure and mark the centerline of the truck hopper. The centerline of the unit or units should be a minimum of 17" from the hopper centerline.
4. Hand valves should be mounted on the side of the hopper at the most convenient height for the operator and clear of the packer controls.
5. The top of the unit mounting plate should be tack welded in place at the height recommended on the envelope dimension sheet of the unit.
CAUTION: SEE NOTE BELOW PICTURE
6. All dimensions should be approved by the customer before final welding.
7. If the mounting plate extends more than 2" above the hopper, a brace should be added.



Mounting heights and locations are recommendations only. It is the responsibility of the installer to insure that the customer is satisfied with the height. Barker Products recommends that after the units are tacked in place, try the units with the can or cans the customer uses. The customer should approve your mount before final welding.

ITEM NO.	PART NUMBER	DESCRIPTION	EXPLODED/QTY.
1	BWA06905	MAINFRAME SUB ASSY	1
2	BWA06935	LIFT PLATE SUB ASSY	1
3	XAE081308	1/2-13 X 1 FLANGED HHCS	6
4	BWA09990	SLIDE SUB ASSY	1
5	BW99308	1/2" SPHERICAL BEARING	4
6	BW06990	SLIDE LINK	2
7	BW02100	1/2" BELLEVILLE SPRING WASHER	8
8	BW02140	1/2-13 X 1 1/4 LOCK BOLT	2
9	BW02125	5/32 X 3/4 SPRING PIN	4
10	XDE081300	1/2-13 SLOTTED NUT	2

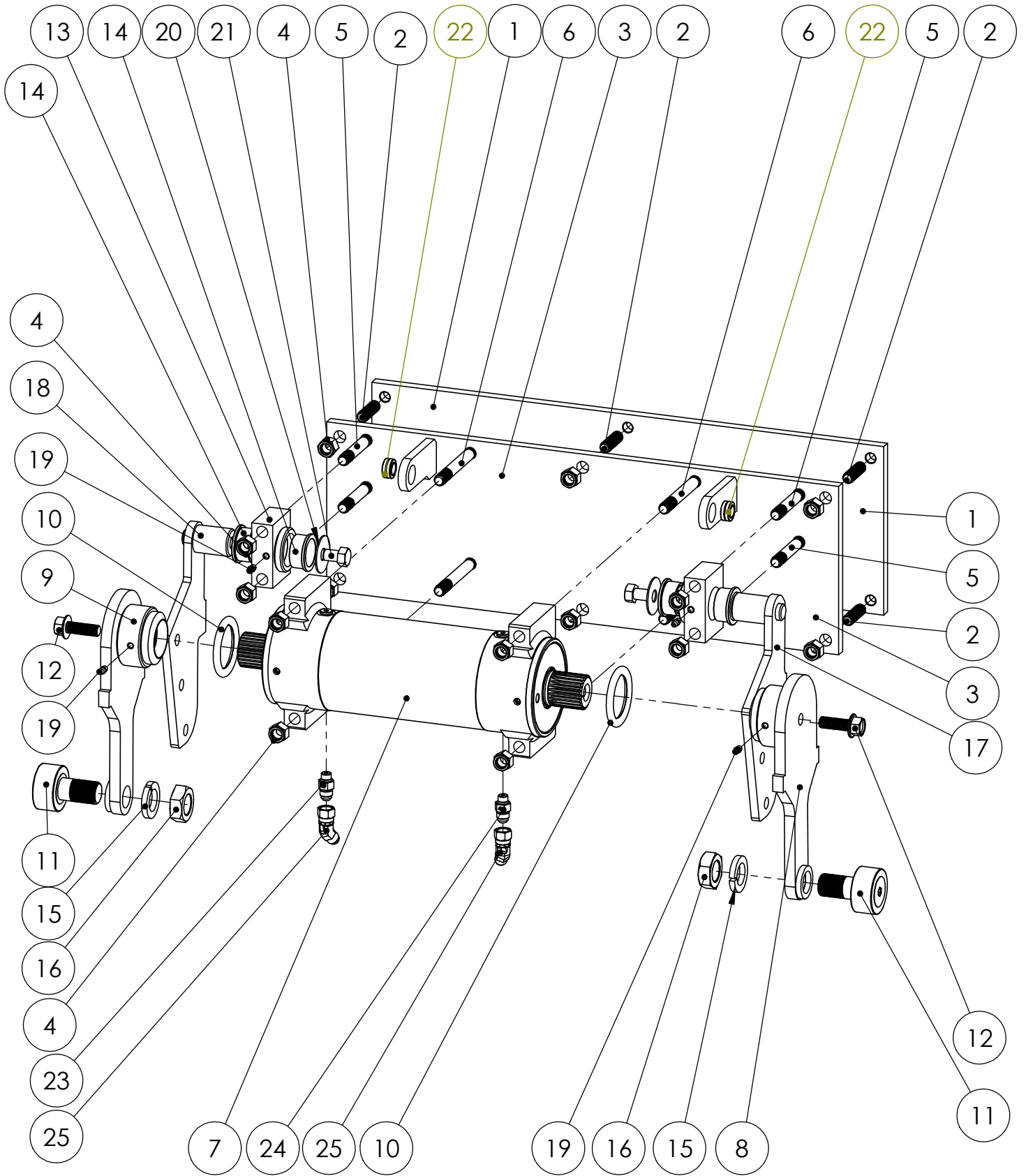


DO NOT SCALE DRAWING		HB2-1541 LIFT	
UNLESS OTHERWISE SPECIFIED: DIMENSIONS ARE IN INCHES TOLERANCES: FRACTIONAL $\pm 1/32$ ANGULAR: MACH $\pm 1^\circ$ BEND $\pm 1^\circ$ TWO PLACE DECIMAL ± 0.010 THREE PLACE DECIMAL ± 0.005		DRAWING NO BU06905	REV 00
MATERIAL: NOTED		SCALE: 1:8	WEIGHT: 212.444 # SHEET 1 OF 1



BARKER PRODUCTS
1310 MILLER ROAD
GREENVILLE, SC
29607

DRAWN BY: R WYMAN
DATE: 10/23/2017
MATERIAL: NOTED



BARKER PRODUCTS
 1310 MILLER ROAD
 GREENVILLE, SC
 29607

DRAWN BY: R WYMAN
 DATE: 10/23/2017
 MATERIAL: NOTED

DO NOT SCALE
 DRAWING
 UNLESS OTHERWISE SPECIFIED:
 DIMENSIONS ARE IN INCHES
 TOLERANCES:
 FRACTIONAL $\pm 1/32$
 ANGULAR: MACH $\pm 1^\circ$ BEND $\pm 1^\circ$
 TWO PLACE DECIMAL ± 0.010
 THREE PLACE DECIMAL ± 0.005

MAINFRAME SUB ASSY PARTS
 HBP2 UNIT

DRAWING NO
 BWA06905 PARTS

REV
 00

SCALE: 1:6 WEIGHT: 131.853 # SHEET 1 OF 2

ITEM NO.	PART NUMBER	DESCRIPTION	EXPLODED/QTY.
1	BW07030	MOUNT PLATE H	1
2	BW07140	PLATE STUD	6
3	BW06905	MAINFRAME HBP2	1
4	XDC082000	1/2-20 NYLOK NUT	14
5	BW06925	BEARING MOUNT STUD	4
6	BW07125	ACTUATOR MOUNT STUD	4
7	BW07000	15K ACTUATOR	1
8	BW06975	RIGHT LIFT ARM	1
9	BW06970	LEFT LIFT ARM	1
10	BW07001	O-RING GREASE SEAL	2
11	BW99030	1 7/8 CAM FOLLOWER	2
12	XAE081312	1/2-13 X 1 1/2 FLANGED HHCS	2
13	BW06915	BEARING MOUNT HBP2	2
14	BW00934	CAST FLANGE BUSHING	4
15	XEB161000	1" LOCKWASHER	2
16	XDB161400	1"-14 HEX JAM NUT	2
17	BW06890	RIGHT LP PIVOT HBP2	1
18	BW06880	LEFT LP PIVOT HBP2	1
19	BW01110	GREASE FITTING - 1/4-28 SHORT	4
20	BW07115	BEARING CAP WASHER	2
21	XAA081306	1/2-13 X 3/4 HHCS	2
22	BW99308	1/2" SPHERICAL BEARING	2
23	BV00053	093 X 6T4S ORIFICE FITTING	1
24	BR03825	6400-06-04 M TUBE X M ORING	1
25	BR04842	6502-06-06 MJ-FJS 45 DEG	2

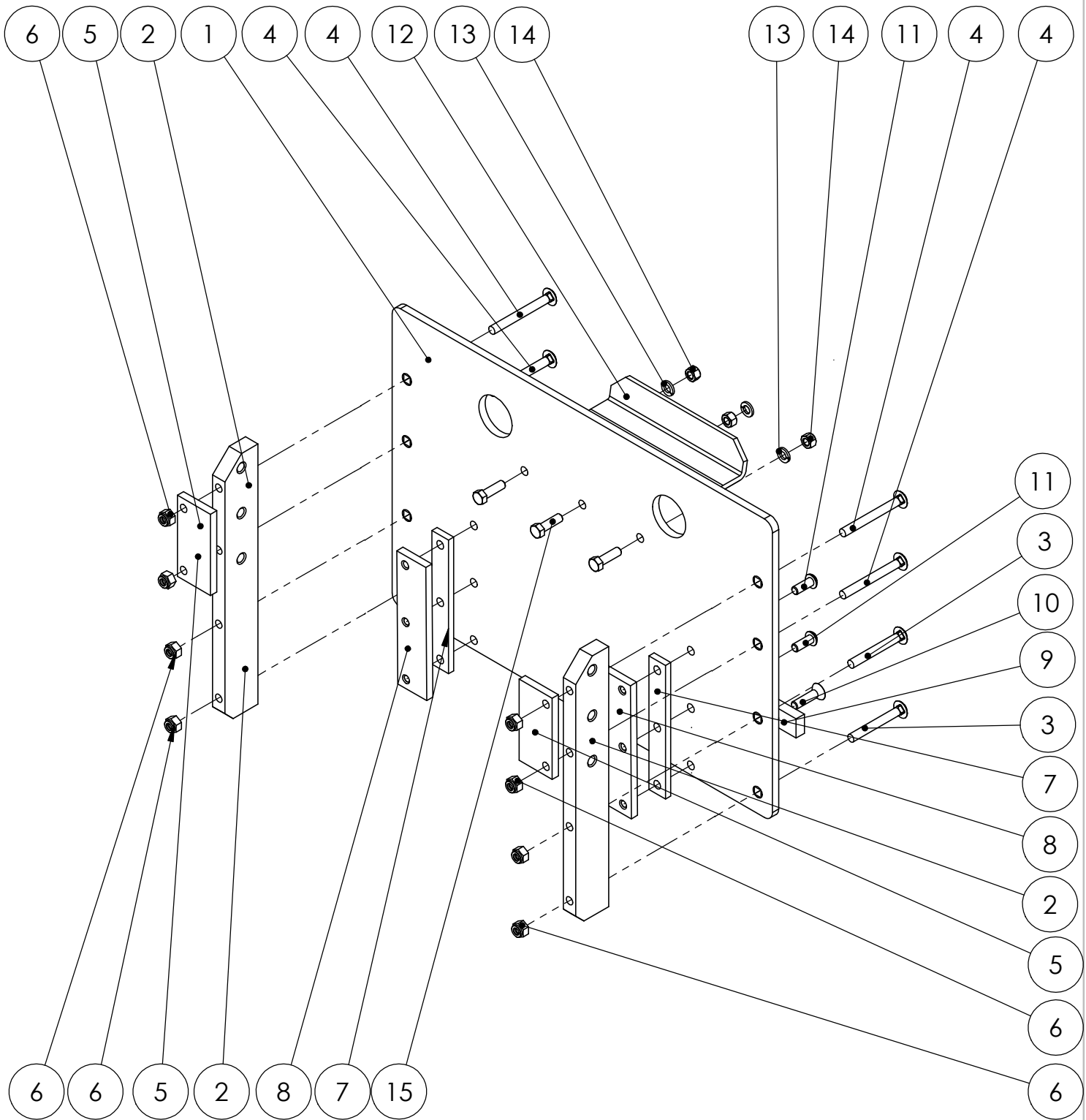


BARKER PRODUCTS
1310 MILLER ROAD
GREENVILLE, SC
29607

DRAWN BY: R WYMAN
DATE: 10/23/2017
MATERIAL: NOTED

DO NOT SCALE
DRAWING
UNLESS OTHERWISE SPECIFIED:
DIMENSIONS ARE IN INCHES
TOLERANCES:
FRACTIONAL ±1/32
ANGULAR: MACH ±1° BEND ±1°
TWO PLACE DECIMAL ±0.010
THREE PLACE DECIMAL ±0.005

MAINFRAME SUB ASSY PARTS
HBP2 UNIT
DRAWING NO
BWA06905 PARTS
REV
00
SCALE: 1:1 WEIGHT: 131.853 # SHEET 2 OF 2



BARKER PRODUCTS
 1310 MILLER ROAD
 GREENVILLE, SC
 29607

DRAWN BY: R WYMAN
 DATE: 10/23/2017
 MATERIAL: NOTED

DO NOT SCALE DRAWING		HBP2 LIFT PLATE SUB ASSY PARTS	
UNLESS OTHERWISE SPECIFIED: DIMENSIONS ARE IN INCHES TOLERANCES: FRACTIONAL ±1/32 ANGULAR: MACH ±1° BEND ±1° TWO PLACE DECIMAL ±0.010 THREE PLACE DECIMAL ±0.005		DRAWING NO BWA06935 PARTS	REV 00
SCALE: 1:6	WEIGHT: 56.025 #	SHEET 1 OF 2	

ITEM NO.	PART NUMBER	DESCRIPTION	EXPLODED/QTY.
1	BW06930	LIFT PLATE HBP	1
2	BW06940	LP MOUNT HBP	2
3	XAH061620	3/8-16 X 3 CARRIAGE BOLT	4
4	XAH061624	3/8-16 X 3 1/2 CARRIAGE BOLT	4
5	BW06950	TRACK CAP HBP	2
6	XDC061600	3/8-16 NYLOK NUT	8
7	BW07330	SLIDE SPACER	2
8	BW07320	SLIDE CAP	2
9	BW10170	CAN SUPPORT	1
10	XAD061612	3/8-16 X 1 1/2 FSHCS	2
11	XAC061608	3/8-16 X 1 BHCS	4
12	BW00800	SADDLE	1
13	XEB061000	3/8 LOCKWASHER	3
14	XDA061600	3/8-16 HEX NUT	3
15	XAA061610	3/8-16 X 1 1/4 HHCS	3



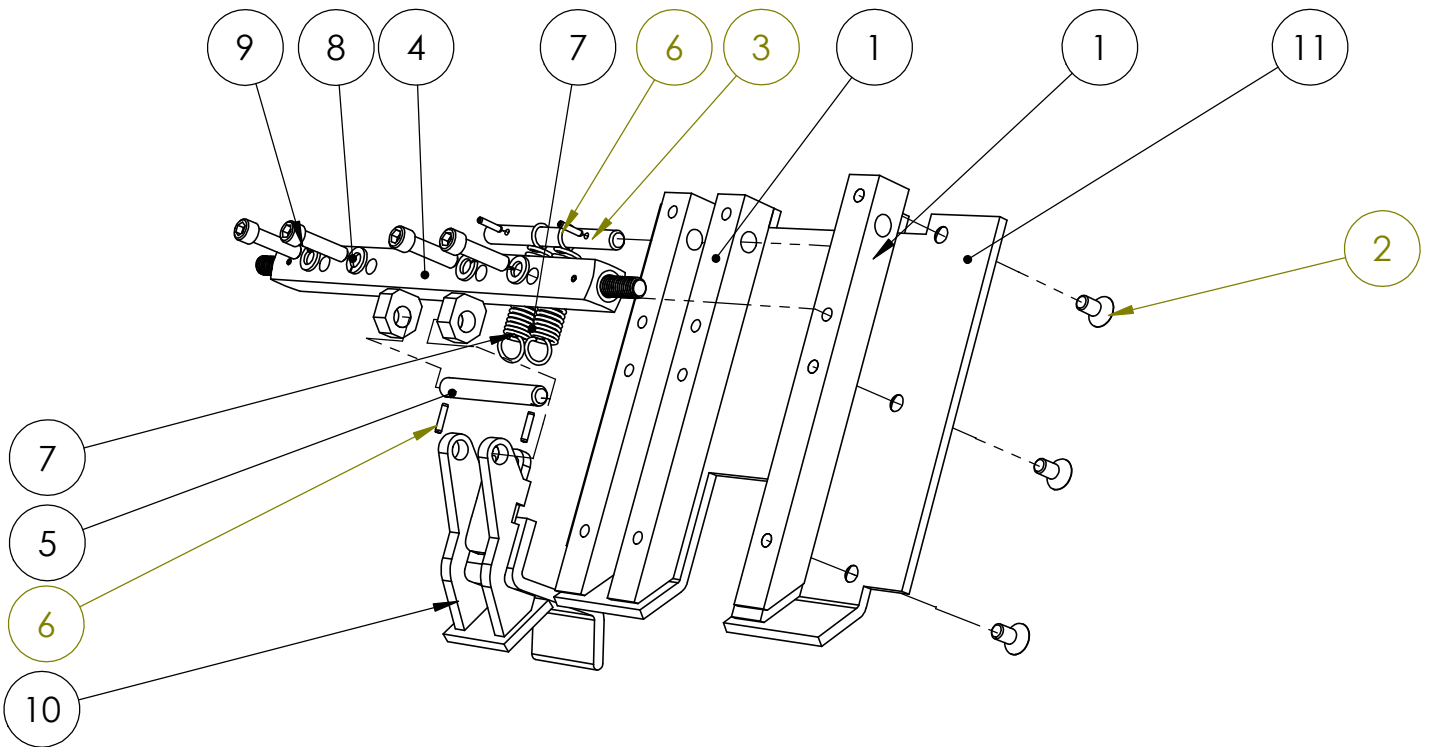
BARKER PRODUCTS
1310 MILLER ROAD
GREENVILLE, SC
29607

DRAWN BY: R WYMAN
DATE: 10/23/2017
MATERIAL: NOTED

DO NOT SCALE
DRAWING
UNLESS OTHERWISE SPECIFIED:
DIMENSIONS ARE IN INCHES
TOLERANCES:
FRACTIONAL ±1/32
ANGULAR: MACH ±1° BEND ±1°
TWO PLACE DECIMAL ±0.010
THREE PLACE DECIMAL ±0.005

HBP2 LIFT PLATE SUB ASSY PARTS
DRAWING NO
BWA06935 PARTS
SCALE: 1:1 WEIGHT: 56.025 # SHEET 2 OF 2
REV
00

ITEM NO.	PART NUMBER	DESCRIPTION	EXPLODE VIEW/QTY.
1	BW10240		4
2	XAD061606	3/8-16 X 3/4 FHSCS	12
3	BW10110	SPRING SHAFT	1
3	BW10060	SLIDE DRIVE	1
5	BW10100	HOOK SHAFT	1
6	BW02125	5/32 X 3/4 SPRING PIN	4
7	BW10120	HOOK SPRING	2
8	XEB061000	3/8 LOCKWASHER	4
9	XAB061612	3/8-16 X 1 1/2 SHCS	4
10	BW10680	HOOK	1
11	BW10230	SLIDE PLATE	1



BARKER PRODUCTS
1310 MILLER ROAD
GREENVILLE, SC
29607

DRAWN BY: R WYMAN
DATE: 10/17/2017
MATERIAL: NOTED

DO NOT SCALE
DRAWING
UNLESS OTHERWISE SPECIFIED:
DIMENSIONS ARE IN INCHES
TOLERANCES:
FRACTIONAL ±1/32
ANGULAR: MACH ±1° BEND ±1°
TWO PLACE DECIMAL ±0.010
THREE PLACE DECIMAL ±0.005

SLIDE PARTS
15K UNITS

DRAWING NO
BWA09990

REV
00

SCALE: 1:4 WEIGHT: 19.600 # SHEET 1 OF 1